



Customs Management Solutions

Welcome

On Track

Working in Partnership

Customs Management

Logistics Knowledge

Company Structure

ISO Certification

CONTENTS



WELCOME

At McLanachan Transport Ltd (MTL), we envelop ourselves in our customers' business - their principles, products and services as we support their operations and grow our relationship. We appreciate the importance and added value that effective logistics management delivers for your business and customers.

Post-Brexit, we have all had to adapt to new import and export procedures across the EU and the European Economic Area, which has led to additional paperwork, processes and data management.

Some businesses guided by their customs management partners have tried to maintain the systems they used pre-Brexit with limited success. On some occasions, this led to a complete breakdown in the supply chain, which has left goods waiting for days dockside for customs clearance.

Brexit and continually evolving logistics management have undoubtedly added complexities and challenges to global transportation. With MTL's many years of logistics and European transport experience, we could foresee possible issues with the current customs process. We took swift action to invest further in our people, systems, and procedures to ensure we were ready to support our customer network with minimal disruption.

A supply chain is only as good as its links, and MTL's team and our customs network partners collectively provide a legislative and robust customs management service. Unforeseen circumstances are expected within customs today, but we are flexible enough to tackle these when they occur. It's vital to our customers, and us, that our fleet is continually on the move, without delays and downtime. Hence, we saw the importance of structuring our customs management division to ensure seamless operations delivery.



Damian McLanachan
Managing Director



On-Track

**Keeping our vehicles and
your products on the move,
welcome to MTL On-Track.**

The MTL in-house customs experts are available to simplify your customs journey and reduce stress and confusion. Navigating customs procedures and regulations throughout the UK and Europe can seem daunting. Determining commodity codes, customs procedure codes (CPC), and any preferential certificates are all areas that we support.

Good planning, robust documentation, and communication to mitigate risk are key to success.

Our extensive knowledge of customs procedures, challenges, and our longstanding relationship with our customs and shipping agent, Eurotransit, ideally places us to offer insight and support to your business, backed by our modern truck and trailer fleet. Our processes and relationships ensure planned consignments meet schedules, mitigating the risk of delays. Our robust tracking and monitoring systems deliver additional value within the process to keep your goods On-Track.



Working in Partnership

MTL works with expert partners to ensure your consignments end-to-end integrity and security.

At MTL, we believe in end-to-end transparency across every aspect of our business. We don't try and tell you we manage every element of your consignment journey by ourselves without any support. Our expertise is in the logistics management and physical journey of your products, and we work with expert support partners to ensure that the journey is trouble-free.

Founded in 1980 and based near the port of Rotterdam, Eurotransit customs and shipping agents are highly regarded within the industry as experienced and adaptable in import and export procedures and customs management.

They have had Authorised Economic Operator (AEO) certification since 2012 and work with our consignment management in the EU and other countries across Europe. These factors demonstrate why your business should be confident in trusting MTL to deliver efficient and cost-effective services.



1

Entries prepared and pre-entered before ship arrives

Based on booking and item reference, when ship leaves GB port loaded.

2

Ship unloaded and manifest pushed through

As the ship is being unloaded in NL the ferry company advises Portbase arrival (Dutch customs monitoring system) and they push through ships manifest.

3

Instant clearance

As soon as the ferry creates clearance the entries are picked up and pushed through. At this moment, we've agreed with Eurotransit that their system connects entries 30 minutes after P&O arrival to 1 hour DFDS arrival, allowing us to monitor and ensure entries are all through, resulting in instant clearance at the time set.

4

Documents received & swift departure

Directly after clearance we receive notification at GB/NL office that the clearance documents are approved to leave. Our systems and processes ensure clear and transparent communications, contributing to good relationships with ferry companies, drivers, and customers.



We are currently in close talks with Eurotransit to implement emergency backup procedures to counter several factors, including cyber attacks, providing an even more robust partnership.

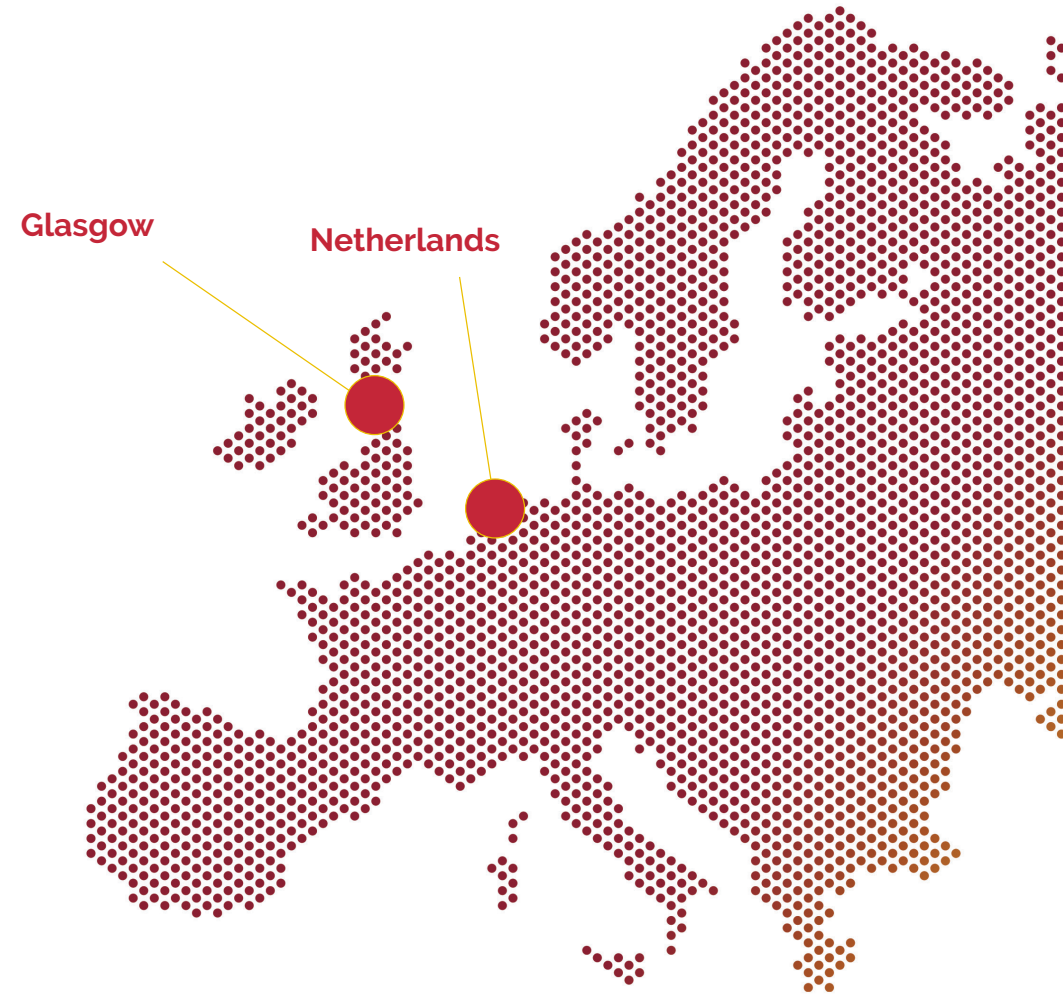
A wealth of UK and European logistics knowledge by your side

From the Highlands of Scotland to the Swiss Alps, our drivers deliver vital medical supplies, commodities and food and drinks across the UK and Europe. We take pride in our ability to help keep our customers and their end-users business wheels turning, with our fleet delivering 24-7, 365 days a year.

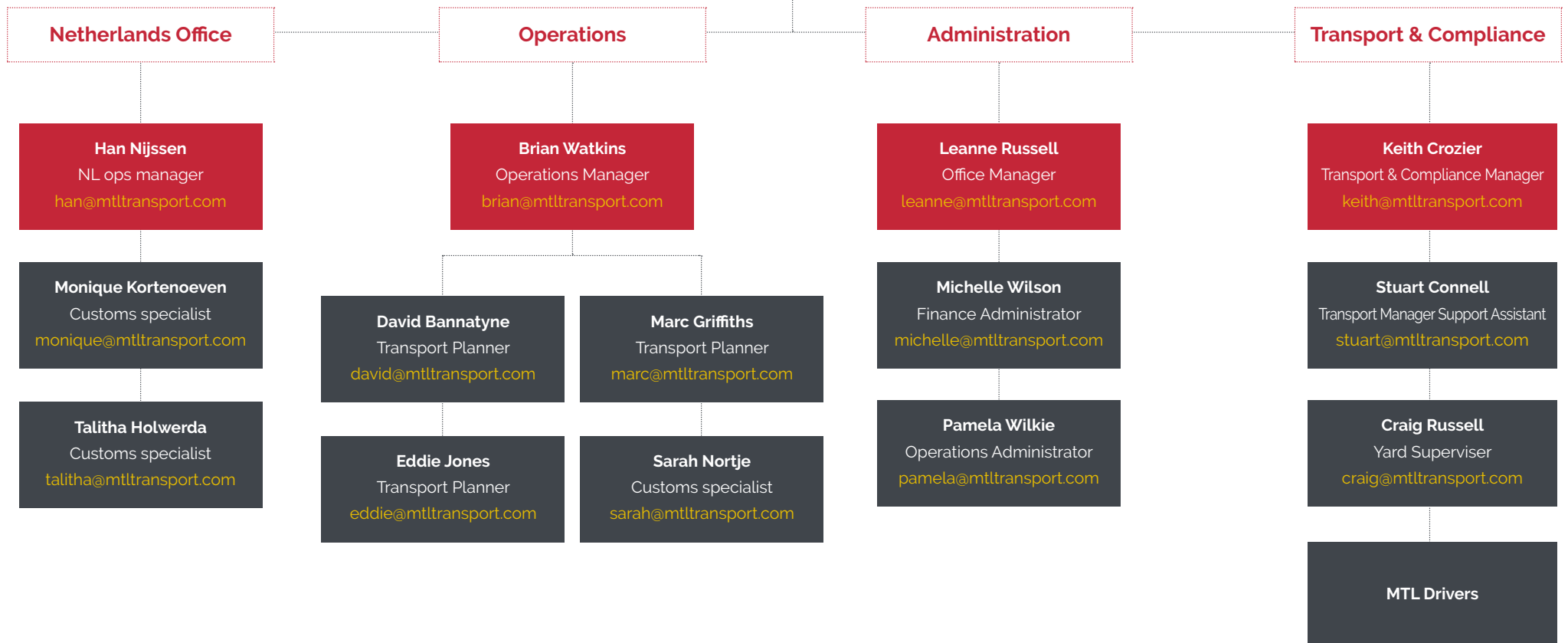
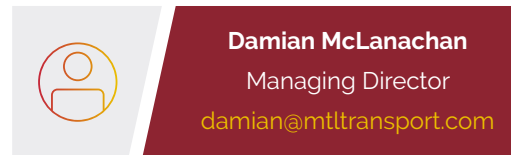
Our large modern, well-maintained fleet of temperature-controlled tractor units and trailers are the envy of the industry. Our drivers take pride in their vehicles. A pride reflected in our on-time, every-time company standard.

European logistics expertise is at the heart of our operations. Tracking and monitoring in real-time ensure there are no surprises for us or our customers. Our Ijmuiden Port warehouse complements this service by allowing fast onward delivery from one central location.

We are also experienced in the management of delivery and collection of consignments travelling via air freight. Our drivers are knowledgeable and trained to ensure our processes meet with airport security and systems.



COMPANY STRUCTURE



For organisations that hold ISO 9001 certification, there is a commitment to follow international process standards for quality management. This must include a high standard of documentation, an end-to-end process trail, and a transparent self-auditing system within the logistics sector.

Achieving the ISO 9001 certification helps align MTLs quality management standards and systems with its customers, who are part of highly regulated and accredited sectors, including foods, wines, spirits & drinks, pharmaceuticals, and life sciences.

How were McLanachan transport assessed?

We achieved ISO 9001 for our main service provisions:

- Logistics services throughout the UK and Europe
- Temperature-controlled
- Fresh and frozen foods
- High-value specialised products
- Hazardous goods.

These critical areas of our client support services place McLanachan Transport in an enviable position within our industry.

Our company advancements toward Good Distribution Practice (GDP) Accreditation, safeguarding and maintaining the quality and integrity of medicines throughout the supply chain, adds further confidence and credibility to our customers.

Explore our company and sector solutions by visiting mtltransport.com

A transportation partner you can rely on.





McLanachan Transport Ltd

2 Grays Road
Green Elms Industrial Estate
Uddingston
G71 6ET

T +44 (0)1698 813248

Email damian@mtltransport.com