



A transportation partner you can rely on.

---

# WELCOME

---

At McLanachan Transport Ltd (MTL), we envelop ourselves in our customers' business - their principles, products and services as we support their operations and grow our relationship. We appreciate the importance and added value that effective logistics management delivers for your business and customers.

Post-Brexit, we have all had to adapt to new import and export procedures across the EU and the European Economic Area, which has led to additional paperwork, processes and data management.

Some businesses guided by their customs management partners have tried to maintain the systems they used pre-Brexit with limited success. On some occasions, this led to a complete breakdown in the supply chain, which has left goods waiting for days dockside for customs clearance.

Brexit and continually evolving logistics management have undoubtedly added complexities and challenges to global transportation. With MTL's many years of logistics and European transport experience, we could foresee possible issues with the current customs process. We took swift action to invest further in our people, systems, and procedures to ensure we were ready to support our customer network with minimal disruption.

A supply chain is only as good as its links, and MTL's team and our customs network partners collectively provide a legislative and robust customs management service. Unforeseen circumstances are expected within customs today, but we are flexible enough to tackle these when they occur. It's vital to our customers, and us, that our fleet is continually on the move, without delays and downtime. Hence, we saw the importance of structuring our customs management division to ensure seamless operations delivery.



Damian McLanachan  
Managing Director



*Effective processes and  
skilled people to manage  
your supply chain.*



## SUSTAINABILITY

Quality management systems  
and robust security procedures  
deliver confidence for you.

---



## OUR PEOPLE

Investment in skilled people  
with continual training drives  
our success.

---



## MANAGEMENT

Built upon industry experience,  
focused on adding value to your  
business and our relationship.

---



## PROCESSES

Our approach ensures our  
systems and processes align  
with your needs.

---



# A wealth of UK and European logistics knowledge by your side

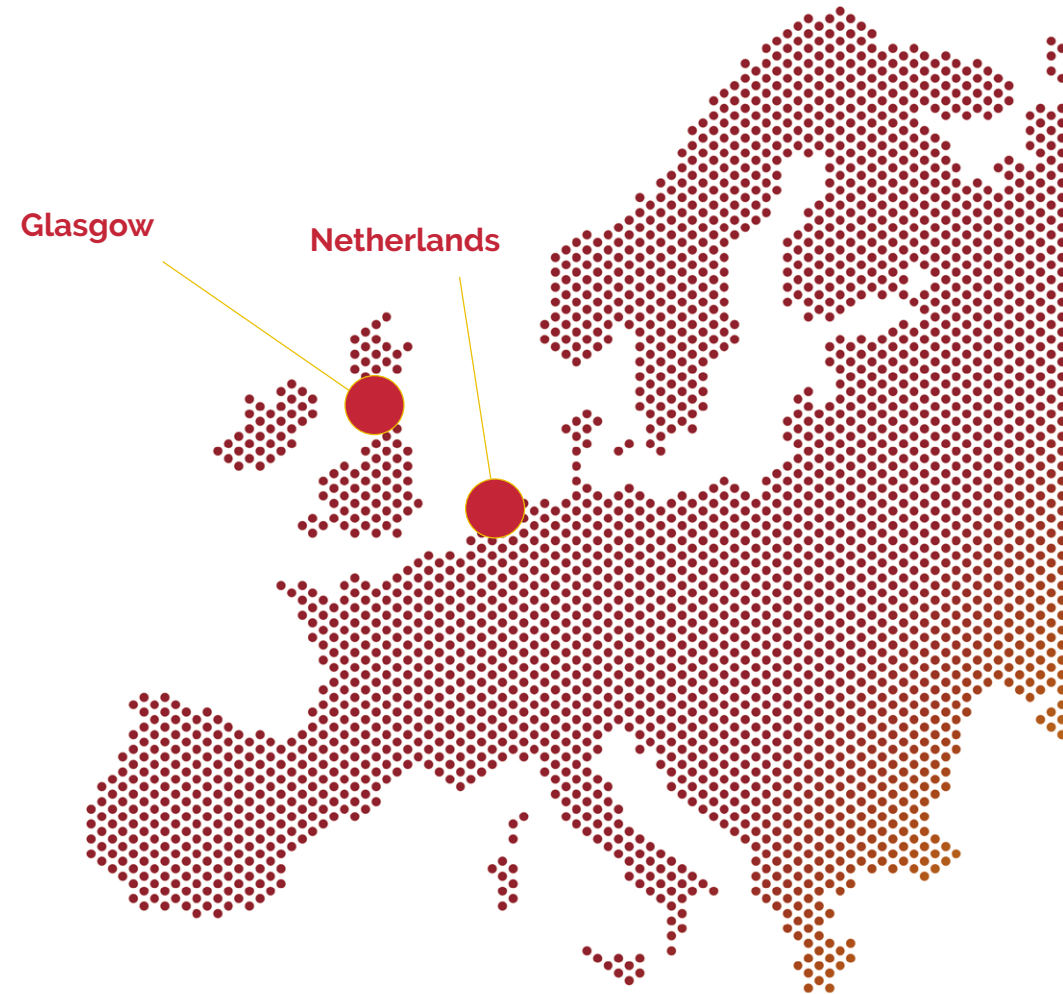
---

From the Highlands of Scotland to the Swiss Alps, our drivers deliver vital medical supplies, commodities and food and drinks across the UK and Europe. We take pride in our ability to help keep our customers and their end-users business wheels turning, with our fleet delivering 24-7, 365 days a year.

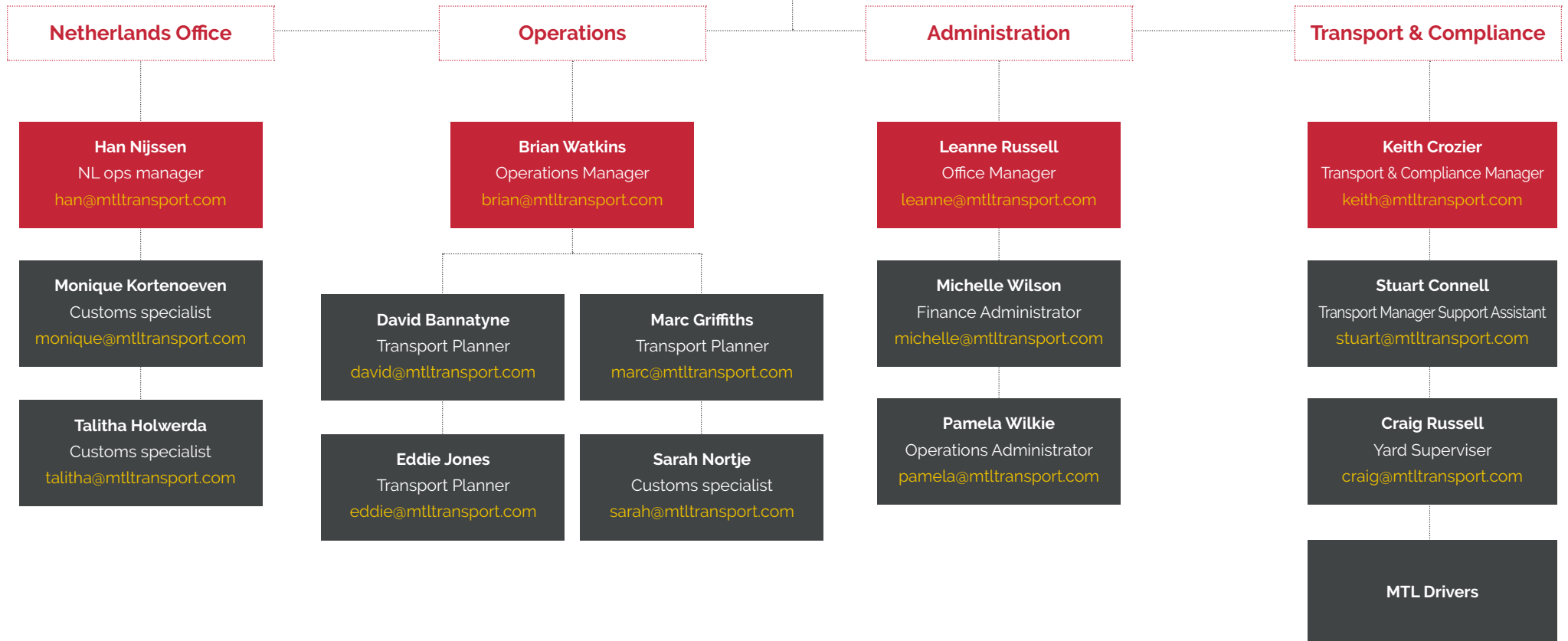
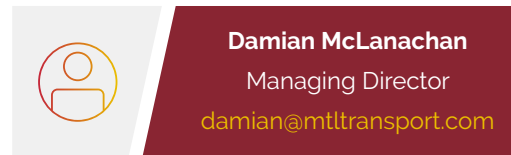
**Our large modern, well-maintained fleet of temperature-controlled tractor units and trailers are the envy of the industry. Our drivers take pride in their vehicles. A pride reflected in our on-time, every-time company standard.**

European logistics expertise is at the heart of our operations. Tracking and monitoring in real-time ensure there are no surprises for us or our customers. Our Ijmuiden Port warehouse complements this service by allowing fast onward delivery from one central location.

We are also experienced in the management of delivery and collection of consignments travelling via air freight. Our drivers are knowledgeable and trained to ensure our processes meet with airport security and systems.



# COMPANY STRUCTURE



## ON-TRACK

**Keeping our vehicles and  
your products on the move,  
welcome to MTL On-Track.**

The MTL in-house customs experts are available to simplify your customs journey and reduce stress and confusion. Navigating customs procedures and regulations throughout the UK and Europe can seem daunting. Determining commodity codes, customs procedure codes (CPC), and any preferential certificates are all areas that we support.

**Good planning, robust documentation, and communication to mitigate risk are key to success.**

Our extensive knowledge of customs procedures, challenges, and our longstanding relationship with our customs and shipping agent, Eurotransit, ideally places us to offer insight and support to your business, backed by our modern truck and trailer fleet. Our processes and relationships ensure planned consignments meet schedules, mitigating the risk of delays. Our robust tracking and monitoring systems deliver additional value within the process to keep your goods On-Track.







## LOGISTICS PLANNING

# Expert logistics planning strategy tailored to your business

McLanachan Transport provides transportation solutions throughout the UK and Europe. We are the trusted supply chain partner for a wide range of businesses and sectors that rely on our services to fulfil their haulage demands.

Logistics Planning

Groupage Solutions

Temperature Controlled

Returnable Container Management

Hazard Consignments

Sensitive Products

Food and Frozen Goods

Pharmaceutical & Healthcare

Pallet Distribution

## APPROACH AND PROCESSES



### **Consultation and Fact-Finding**

We start by getting to know you, your company and culture, along with an understanding of your product. We structure the most appropriate solutions to integrate with your processes and systems.

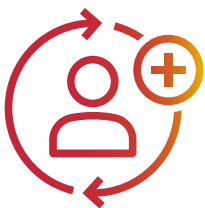


### **Problem Solving**

Driving solutions is key to the relationships we build. We explore and address any previous transportation issues and develop robust budget control and cost management to ensure measurable results for you.







### Management

We act as part of your team, ensuring that we work to the same objectives. We base our success on results, and we assist with schedules, tracking and monitoring, throughout customs control management.



### Reporting and Aftercare

Our clients are familiar with our open communications throughout our operations. Our reporting levels give you confidence, from real-time monitoring to end-to-end reporting systems and quarterly reviews.

## WORKING IN PARTNERSHIP

**MTL works with expert partners to ensure your consignments end-to-end integrity and security.**

At MTL, we believe in end-to-end transparency across every aspect of our business. We don't try and tell you we manage every element of your consignment journey by ourselves without any support. Our expertise is in the logistics management and physical journey of your products, and we work with expert support partners to ensure that the journey is trouble-free.

Founded in 1980 and based near the port of Rotterdam, Eurotransit customs and shipping agents are highly regarded within the industry as experienced and adaptable in import and export procedures and customs management.

They have had Authorised Economic Operator (AEO) certification since 2012 and work with our consignment management in the EU and other countries across Europe. These factors demonstrate why your business should be confident in trusting MTL to deliver efficient and cost-effective services.



## BS EN ISO 9001:2015

For organisations that hold ISO 9001 certification, there is a commitment to follow international process standards for quality management. This must include a high standard of documentation, an end-to-end process trail, and a transparent self-auditing system within the logistics sector.

**Achieving the ISO 9001 certification helps align MTLs quality management standards and systems with its customers, who are part of highly regulated and accredited sectors, including foods, wines, spirits & drinks, pharmaceuticals, and life sciences.**

### **How were McLanachan transport assessed?**

We achieved ISO 9001 for our main service provisions:

- Logistics services throughout the UK and Europe
- Temperature-controlled
- Fresh and frozen foods
- High-value specialised products
- Hazardous goods.

These critical areas of our client support services place McLanachan Transport in an enviable position within our industry.

Our company advancements toward Good Distribution Practice (GDP) Accreditation, safeguarding and maintaining the quality and integrity of medicines throughout the supply chain, adds further confidence and credibility to our customers.

Explore our company and sector solutions by visiting [mtltransport.com](https://mtltransport.com)

A transportation partner you can rely on.





## GROUPAGE SOLUTIONS



We are your  
key groupage  
solutions partner

Our zero compromise approach to groupage solutions ensures your goods arrive where and when required - first time, every time, and most importantly, at a cost-effective price. That's what makes us a trusted and respected transport logistics partner.

Groupage transport solutions allow us to consolidate multiple and compatible shipments from several locations into one single multidrop load. When delivering goods, we occasionally have spare lorry capacity that smaller deliveries can use. Adding your smaller consignments to almost full loads not only helps you by providing reduced costs but allows us to reduce CO2 emissions by making fewer journeys.

## TEMPERATURE CONTROLLED



## Effective end-to-end temperature-controlled solutions

The transportation temperature of a wide variety of cargo requires a focused approach from collection to delivery. Our processes and systems ensure that we safeguard products with the same attention and care you took in producing them.

Our service starts from your initial enquiry, understanding your product and planning in advance until we safely deliver at the final destination. We plan and care for your temperature-sensitive consignments, ensuring they maintain premium quality throughout their journey.

Our temperature-controlled transport offers a range from -25 to +25 degrees with the ability to maintain a constant temperature to keep your products in prime condition throughout their journey.

## RETURNABLE CONTAINER MANAGEMENT



## Helping extend the life of your container assets

Our returnable container management service helps ensure that your valuable container assets are returned, maximising their usability by reducing costs, environmental impact by recycling, minimising material usage and waste disposal costs. We can manage reverse logistics as a separate part of our service from your delivery journey, where we maximise useable space to help get your assets back to your depot.

Our service helps remove the inefficiency of use-once containers by providing a return service that is environmentally friendly and cost-effective. You may already know the benefits of reusable containers - still, sometimes the return logistics can be challenging to coordinate.



## HAZARDOUS CONSIGNMENTS



## Safe and secure transportation of hazardous goods

Our expert team has the experience and knowledge to reassure our customers that our professionalism and expertise will ensure we deliver their consignments without compromise, incident or injury when they send hazardous or dangerous materials. Our certified drivers work as part of our planning team so they are fully aware of your cargo before the trailers are loaded.

We provide all drivers delivering hazardous goods with rigorous training and assessment procedures. All drivers are ADR Certified from the Department of Transport, which provides our customers with peace-of-mind when choosing McLanachan Transport.

## SENSITIVE PRODUCTS



## Handling your sensitive cargo with care and attention

When our customers require special transportation handling, McLanachan Transport is ready to handle a wide range of consignments, including luxury cars, products that can be sensitive to temperature fluctuations, significant shock or movement.

Our many years of experience of sensitive transport operations and our knowledge of the correct handling methods gives our customers the confidence to trust us with their goods.

Planning is the key to every transport journey we make, and when it comes to sensitive cargo, we assess the compatibility with any other products possibly within the load. Our team will analyse all transport enquiries and match the best logistic route and vehicle to ensure it's not only a cost-effective solution, but one where your cargo arrives at its destination safely.

## FOOD AND FROZEN GOODS TRANSPORT



## Continually adding value to food and frozen goods supply chain

As with all aspects of our business, our fresh and frozen goods service is managed from start to finish. We also ensure that if any parameters change from these planned settings during a journey, we have the facilities and service to react and remedy.

We understand the importance of timely and protected delivery of all our client's consignments throughout all our temperature-controlled services. Our latest temperature-controlled vehicles are all fitted with Blue Tree Systems, tracking and temperature monitoring as standard and have split-section compartments for multiple goods at varying temperatures. In addition to each vehicle having temperature controlled software, all vehicles are also linked directly, in real-time to our online tracking, monitoring and Thermo King temperature-controlled system.



## PHARMACEUTICAL AND HEALTHCARE



# Security and product integrity for Pharmaceutical & Healthcare logistics

McLanachan Transport provides specialised transportation services to medical institutions and industry-leading pharmaceutical and life science companies throughout the UK and Europe. Our expertise will ensure the security and integrity of your products in our care throughout each journey.

We provide our customers with a flexible collection and delivery solution throughout Europe and the UK. Pharmaceutical products can be susceptible to temperature, and we strictly adhere to their specific ranges throughout the transportation process. Our experience and successful past track record transporting pharmaceutical and healthcare products can provide you with a seamless solution.

## PALLET DISTRIBUTION



# McLanachan Transport is the premier choice for pallet distribution

Our logistics expertise allows us to deliver consignments from single pallets to part and full loads throughout the UK and Europe. From regular, scheduled shipments to one-off reactive loads, we have the expertise to ensure hassle-free deliveries.

Our modern fleet, processes and technology enable us to deliver throughout the UK and European road network. Our pallet distribution services provide a wide range of solutions to match your requirements. From single pallets to crates and cages, we deliver a customer experience defined by reliability and value.

We work across all industry sectors with some of the leading manufacturers, retailers and distributors. The markets that we service include food, fast-moving consumer goods, pharmaceuticals and medical, automotive and machinery.

*Every consignment and journey is backed with experienced, knowledgeable and passionate people.*



## PLANNING

The traffic planner can use this information to intervene where necessary, advising on the tachograph's operation to ensure the driver respects their driving and resting times.

---



## MONITORING

The monitoring of real-time temperature data and management is a service that is critical to many of our clients, including those with temperature essential consignments of product.

---



## COMPLIANCE

We meet all legislation set out by our industry for the safe and secure transportation of temperature-controlled goods, as well as our own robust internal strategies.

---



## REPORTING

Live updates of refrigeration unit settings, operating mode, equipment alarm codes, fuel level and cargo temperatures. Reports temperature out of range conditions and refrigeration unit shut down.

---



# Solutions to your transport challenges

Our sector-specific transportation solutions help businesses reach their logistics targets and monitor their precious cargo in real-time. Our professional team tailor every service, system, transport and resources to meet your needs while continually working to reduce your transportation costs.



**Pharmaceutical  
& Healthcare**



**Life  
Sciences**



**Hazardous  
Material**



**Emergency  
& Aid**



**Fast Moving  
Consumer Goods**



**Animal  
Byproducts**



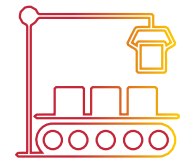
**Waste**



**Wines, Spirits  
& Drinks**



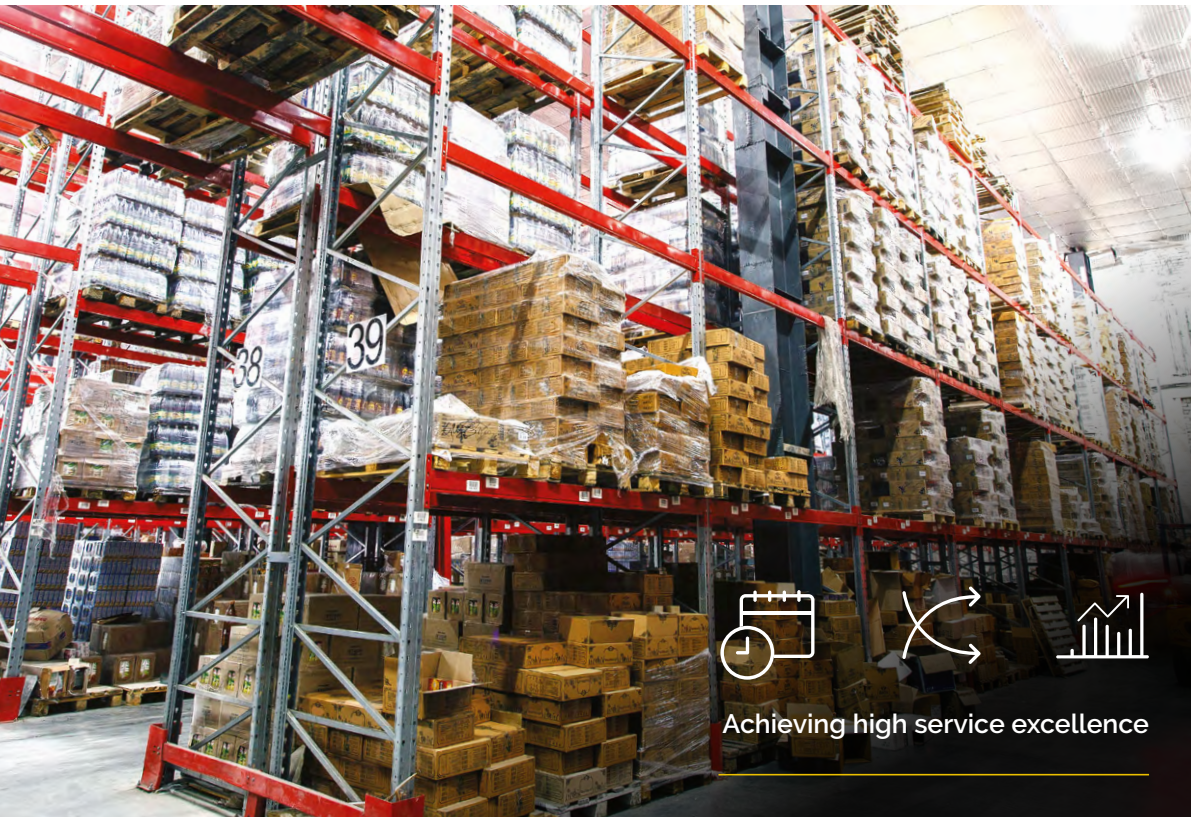
**Oil and Gas**



**Industrial  
& Manufacturing**

## SUPPLY CHAIN MANAGEMENT

# Expert transportation strategy for supply chain management



At McLanachan Transport, we work with our clients to ensure a fluid transportation strategy across the supply chain network. From collection to delivery, we manage the consignments to help keep our customers competitive.

Working as your shipping and supply chain partner, we will help evaluate your logistics requirements based on a combination of transportation demands and inventory management, balancing costs and delivery deadlines.

We address any problems in the transportation supply chain network through the analytics provided by our transportation management system. We feed these insights back to allow you to make smarter business decisions throughout your supply chain, maximising production, goods in transit and end-user delivery schedules.

Tracking and monitoring technology also help provide better integration between physical product movement and visibility to our clients in real-time. This system allows managers to understand better when goods will be on the road, where they are in transit and expected delivery times.

UK AND EUROPEAN WIDE REACH

# Providing transport logistics across the UK and Europe

Logistics planning is at the core of our UK and European transportation network.

Our expertise in Logistics Network Design is vital for our clients and helps ensure cost-effective and on-time deliveries.

As your transportation partner, McLanachan Transport focuses on managed, reliable, and adaptable road haulage logistics throughout the UK and Europe. We provide real-time data to clients and continuously monitor all vehicle movements from pick-up to delivery across the continent.



The clear choice for Europe-wide haulage

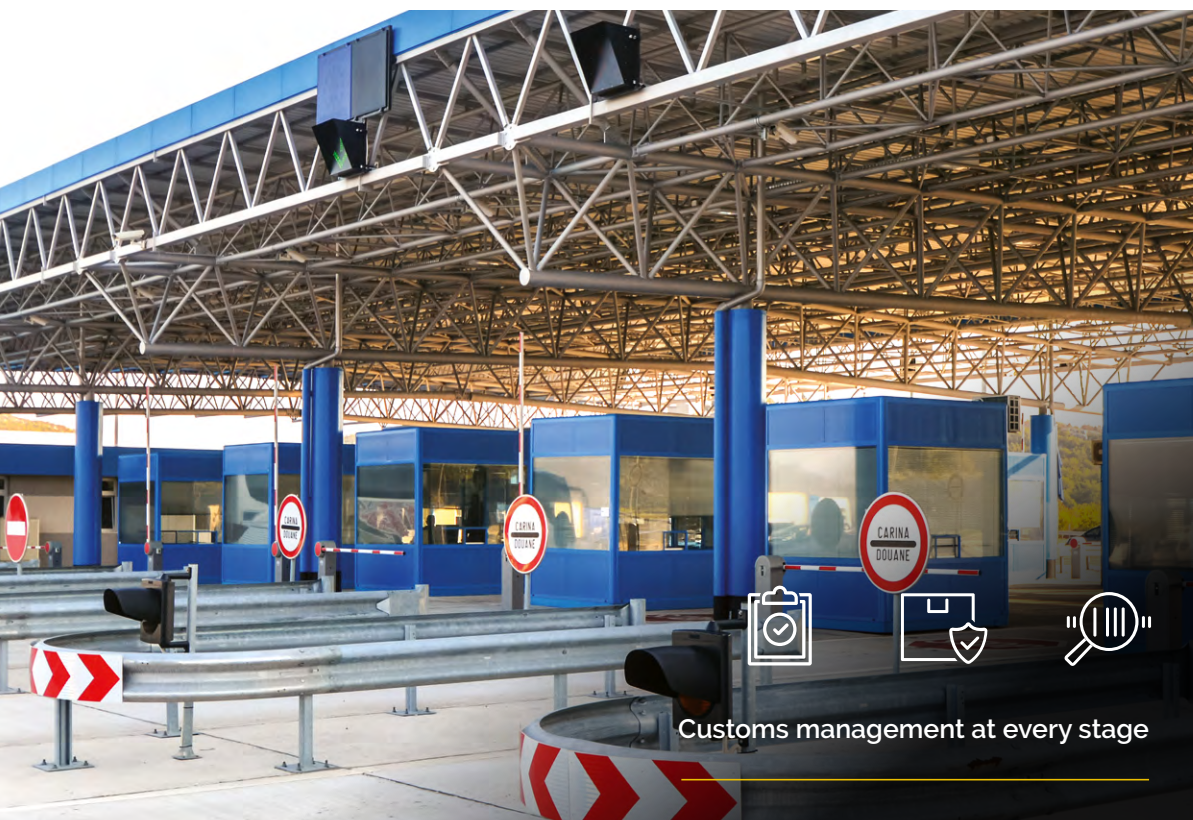


# Keeping your consignments moving across Europe

We have designed our customs management solutions to help take the concern out of customs clearance by ensuring you have the correct paperwork to manage all port and customs formalities. From legislation to time-critical processing, we enable a fast and transparent service while avoiding delays.

The formalities and procedures of customs clearance for goods entering and leaving a specific national territory can be daunting and cumbersome. Our experience of UK, European and ongoing international freight management will help reduce any issues before they become a problem. We work with you to address having goods held up at a border, in advance where possible, and reactively if problems arise.

Customs clearance depends on the particularities of the shipment and whether shipping by road, rail or sea. We work with our customers to ensure they are compliant and have the right paperwork submitted to the proper authorities for inspection and approval. Our integrated tracking and monitoring allow our clients to log in and check any consignment status, which is especially important when goods are traversing customs borders.





1

## Entries prepared and pre-entered before ship arrives

Based on booking and item reference, when ship leaves GB port loaded.

2

## Ship unloaded and manifest pushed through

As the ship is being unloaded in NL the ferry company advises Portbase arrival (Dutch customs monitoring system) and they push through ships manifest.

3

## Instant clearance

As soon as the ferry creates clearance the entries are picked up and pushed through. At this moment, we've agreed with Eurotransit that their system connects entries 30 minutes after P&O arrival to 1 hour DFDS arrival, allowing us to monitor and ensure entries are all through, resulting in instant clearance at the time set.

4

## Documents received & swift departure

Directly after clearance we receive notification at GB/NL office that the clearance documents are approved to leave. Our systems and processes ensure clear and transparent communications, contributing to good relationships with ferry companies, drivers, and customers.

**Eurotransit provide a transparent, communicative and collaborative approach to customs management.**



**We are currently in close talks with Eurotransit to implement emergency backup procedures to counter several factors, including cyber attacks, providing an even more robust partnership.**



Grays Road, Uddingston, Glasgow, G71 6ET

01698 813 248

[info@mtltransport.com](mailto:info@mtltransport.com)

[www.mtltransport.com](http://www.mtltransport.com)

